

KC

Regional

Climate Action Summit

*Presented by SMART Local Union 2,
IBEW Local Union 124 and Power Partners*



SUMMIT AGENDA:

10:00 a.m.

OPENING SESSION
Sponsored by: NextEra Energy
Joe Lauria — Fox 4 Meteorologist — Emcee

*Arrupe Hall,
Auditorium*

REMARKS FROM CAKC LEADERSHIP & VIDEO

Board Chair Hillary Parker Thomas — Councilmember — City of Mission, KS
President Jeremy Knoll — Director of Sustainability — BNIM

WELCOME TO KANSAS CITY

Alvin Brooks — Kansas City Civic Leader

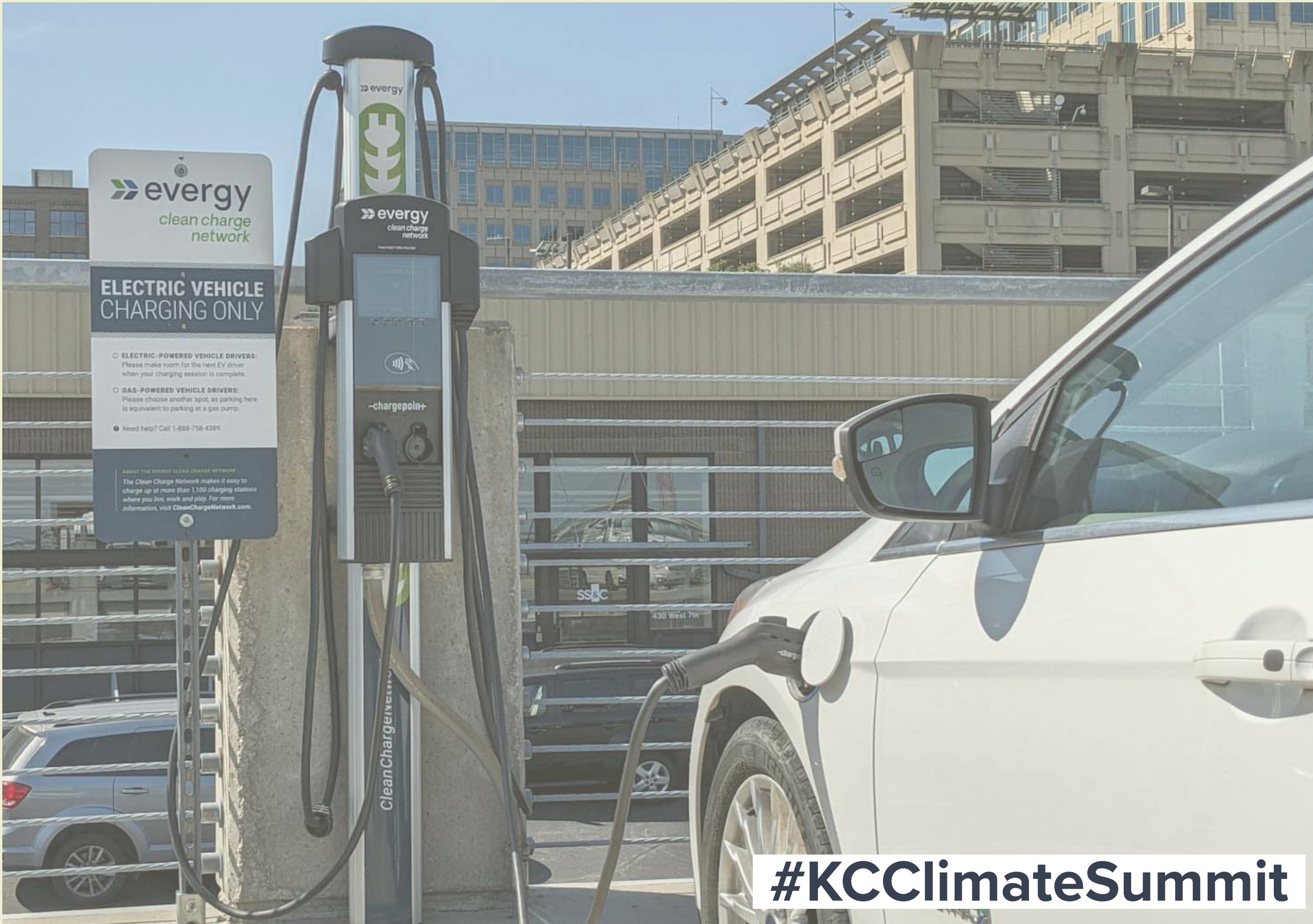
CLIMATE CHANGE IN THE HEARTLAND

Doug Kluck — Central Region Climate Services Director — NOAA

THE OPPORTUNITY

Shalini Vajjhala, PhD — Founder & CEO — Re:Focus Partners

TRANSITION TO BREAKOUT SESSIONS



#KCClimateSummit

(Continued)

KC

Regional

Climate Action Summit

*Presented by SMART Local Union 2,
IBEW Local Union 124 and Power Partners*



SUMMIT AGENDA:

11:00 a.m.-
2:00 p.m.

EV TEST DRIVES
Sponsored by: Evergy, Plug In KC
(Sign up by Main Entrance)

Arrupe Hall,
Parking Lot



11:00 a.m.

MORNING BREAKOUT SESSIONS
Sponsored by: AdventHealth, Bayer, Husch
Blackwell, Grundfos and City of Mission

Session 1

**Pathways to Decarbonization
of the Energy Sector**

Ashok Gupta — NRDC, Moderator
Mark Walter — Savion
Kayla Messamore — Evergy
Zachary Walker — City of Independence
Andrew French — Kansas Corporation Commission

Arrupe Hall,
Auditorium

Session 2

**Federal Funding Opportunities for
Municipal Government Buildings**

Ashley Sadowski — BE-Ex KC, Moderator
Jennifer Geen — Trane
Jennifer Gunby — USGBC

Arrupe Hall,
Room 114

Session 3

**Funding Public Transit for a
Climate-Resilient Region**

David Johnson — TransPro Consulting, Moderator
Janee Hanzlick — Johnson County Commissioner
Melissa Bynum — Wyandotte County Commissioner
Manny Abarca — Jackson County Commissioner
Scott Wagner — Clay County Commissioner

Magis Activity
Center

Session 4

Building Better Buildings

Jeremy Knoll — BNIM, Moderator
Ashley Eusey — Hoefer Welker
Danny Roberson — Arnold Development Group
Sush Govindan — Passive House Resident

St. Ignatius
Science Center,
Room 115



Noon-
1:15 p.m.

LUNCH
Sponsored by: Hallmark
Musical guest: The Stinging Nettles

Kinerk
Commons

CLIMATE EXPO
Sponsored by: Black & Veatch

Kinerk
Commons

(Continued)

KC

Regional

Climate Action Summit

***Presented by SMART Local Union 2,
IBEW Local Union 124 and Power Partners***



SUMMIT AGENDA:

**12:30 p.m.-
1:15 p.m.**

LUNCHTIME PRESENTATIONS (INDOORS)
Sponsored by: Victor L. & Helen B. Regnier Fund
(Live Music and Expo Continue Outdoors)

Dialogue 1

Roundtables: Solutions in Action
(Limited to 100 Participants)

*Arrupe Hall,
Room 114*

*Jeremy Knoll — Climate Action KC, Moderator
Jennifer Gunby — USGBC
Natalie Gray — Evergy
Ian Fannin Hughes — Johnson County
Rachel Stroer — The Land Institute
Heather Nevarez — KC Can Compost*

Dialogue 2

**Understanding the Language and
Buzzwords of Climate Change**

*Arrupe Hall,
Auditorium*

Kristin Riott — Bridging The Gap

Dialogue 3

**Federal Climate Funding
Opportunities From the EPA**

*St. Ignatius
Science Center,
Room 115*

Andrew Wynne — EPA Region 7



1:30 p.m.

AFTERNOON BREAKOUT SESSIONS
Sponsored by: JE Dunn, Kala Performance Homes,
TreanorHL and Missouri Organics

Session 1

**Making the Business Case: Kansas City
Companies Delivering on Climate Solutions**

*Arrupe Hall,
Auditorium*

*Jeremy Knoll — BNIM, Moderator
Kristin Edie — Hallmark
Patrick Hogan — Black & Veatch*

Session 2

Climate Planning in Action

*Arrupe Hall,
Room 114*

*Tom Jacobs — MARC, Moderator
Sollie Flora — Mayor, City of Mission
Lara Isch — City of Overland Park
Andy Savastino — City of Kansas City, Missouri*

Session 3

Going Solar

*Magis Activity
Center*

*Whitney Wilson — WaterOne Board, Moderator
Bo Moreno — IBEW Local 124
Karlo Meave — SunSmart*

Session 4

**Where Stormwater and Environmental
Justice Meet**

*St. Ignatius
Science Center,
Room 115*

Kristin Riott — Bridging The Gap

(Continued)

SUMMIT AGENDA:

2:45 p.m.

CLOSING SESSION
Sponsored by: BranchPattern

Arrupe Hall,
Auditorium

Welcome back — Hartzell Gray — KC Morning Show

THE INTERSECTION OF BUILDINGS & OPPORTUNITY: PANEL DISCUSSION

Mike Kelly — Johnson County Commission Chair, Moderator
Ashley Sadowski — Director — Building Energy Exchange KC
Fahteema Parrish — CEO — Parrish & Sons Construction
Gloria Ortiz-Fischer — Executive Director — Westside Housing Organization

DRIVING THE ENERGY TRANSITION WITH EVs: PANEL DISCUSSION

Greg Shelton — Prairie Village Councilmember and Director of Strategy, Operations and Marketing — Black & Veatch
Dan Kelly — Senior Manager — Panasonic
Nick Voris — Senior Manager of Electrification Products and Services — Evergy
Philip Jennings, PE — Principal Electrical Engineer — Jennings Engineering LLC
Tami Alexander — Transportation Electrification Manager — Kansas Department of Transportation

REFLECTIONS

Closing comments — Hartzell Gray
Finale performance — The Phantastics



4:00 p.m.

RECEPTION EVENT*
Sponsored by: Panasonic
Musical guest: The Phantastics

*for Premium Pass holders only

Kinerk
Commons



Breakout Room #1
Arrupe Hall Auditorium Schedule
[Return to main event agenda](#)

10:00 a.m. MAIN EVENT: OPENING SESSION

11:00 a.m. Pathways to Decarbonization of the Energy Sector

Description	The panel will discuss near term opportunities and challenges to deploying renewables and storage at scale; how shaping demand can help meet reliability, cost and decarbonization challenges; how to manage growth in electricity demand from heat pumps and vehicle electrification; and the role of hydrogen in decarbonizing the power and industrial sectors.
Time	11:00-12:00 p.m.
Location	<i>Arrupe Hall Auditorium</i>
Presenters	<i>Moderator: Ashok Gupta, NRDC Mark Walter, Savion Kayla Messamore, Evergy Zachary Walker, City of Independence Andrew French, Kansas Corporation Commission</i>

12:30 p.m. Lunchtime Dialogue: Understanding the Language and Buzzwords of Climate Change

Description	Like any complicated topic, climate change has given rise to its own arcane vocabulary and buzzwords. What’s the difference, for example, between carbon net zero and carbon neutral? What is the CO2 equivalent of methane? In this session, some of the potentially confusing language is de-mystified, and the important concepts behind the words explored in basic terms.
Time	12:30-1:15 p.m.
Location	<i>Arrupe Hall Auditorium</i>
Presenters	<i>Kristin Riott, Bridging The Gap</i>

Breakout Room #1 (Continued)
Arrupe Hall Auditorium Schedule
[Return to main event agenda](#)

1:30 p.m. *Making the Business Case: Kansas City Companies Delivering on Climate Solutions*

Description	Kansas City companies are leading the clean energy transition! This session will feature two case studies from local business leaders, describing their company’s journey towards improving climate impacts, and will expand on steps other businesses can take to get started and build momentum for continuous performance improvements.
Time	1:30-2:30 p.m.
Location	Arrupe Hall Auditorium
Presenters	Moderator: Jeremy Knoll, BNIM Kristin Edie, Hallmark Patrick Hogan, Black & Veatch

2:45 p.m. *MAIN EVENT: CLOSING SESSION*



Breakout Room #2
Arrupe Hall, Room 114 Schedule
[Return to main event agenda](#)

11:00 a.m. Federal Funding Opportunities for Municipal Government Buildings

Description	Our local government and institutional buildings play a critical role in reaching our net-zero goals. We will discuss strategies for decarbonizing public building stock, the unprecedented funding opportunities through the Inflation Reduction Act to facilitate these upgrades, and a case study in St. Louis using energy service contracting. If you are an elected official, local government employee, or a citizen interested in advocating for these practices in your municipality, please join us!
Time	11:00-12:00 p.m.
Location	<i>Arrupe Hall, Room 114</i>
Presenters	<i>Moderator: Ashley Sadowski, BE-Ex KC Jennifer Geen, Trane Jennifer Gunby, USGBC</i>

12:30 p.m. Lunchtime Dialogue: Solutions in Action Roundtable

Description	Summit Roundtables offer a short-format, facilitated small group conversation focused on a range of climate topics and opportunities. Tables are limited first-come, first-served (max 100 people total).
Time	12:30-1:15 p.m.
Location	<i>Arrupe Hall, Room 114</i>
Presenter	<i>Moderator: Jeremy Knoll, Climate Action KC Jennifer Gunby, USGBC Natalie Gray, Evergy Ian Fannin Hughes, Johnson County Rachel Stroer, The Land Institute Heather Nevarez, KC Can Compost</i>

Breakout Room #2 (Continued)
Arrupe Hall, Room 114 Schedule
[Return to main event agenda](#)

1:30 p.m. <i>Climate Planning in Action</i>	
Description	Join MARC’s Chief Resilience Officer Tom Jacobs as he moderates a discussion between City of Mission Mayor Sollie Flora, Overland Park Sustainability Director Lara Isch, and the City of Kansas City, Missouri Chief Environmental Officer Andy Savastino. The panelists will explore their various approaches towards implementing the Regional Climate Action Plan in each of their own communities.
Time	1:30-2:30 p.m.
Location	<i>Arrupe Hall, Room 114</i>
Presenter	<i>Moderator: Tom Jacobs, MARC Sollie Flora, Mayor, City of Mission Lara Isch, City of Overland Park Andy Savastino, City of Kansas City, Missouri</i>



Breakout Room #3

Magis Activity Center Schedule

[Return to main event agenda](#)

11:00 a.m.

Funding Public Transit for a Climate-Resilient Region

Description	Transportation is the third biggest emitter of greenhouse gases in the KC metro because we’ve primarily invested in carbon intensive ways to get around. This is despite our rich transit history of interurbans and streetcars that existed before the car dominated our cities. A panel of local elected officials will discuss plans for expanding the transit network beyond what exists today, along with a brief introduction to how our existing transit system is funded and governed.
Time	11:00-12:00 p.m.
Location	Magis Activity Center
Presenters	Moderator: David Johnson, TransPro Consulting Janee Hanzlick, Johnson County Commissioner Melissa Bynum, Wyandotte Co. Commissioner Manny Abarca, Jackson County Commissioner Scott Wagner, Clay County Commissioner

1:30 p.m.

Going Solar

Description	Heavy precipitation and flooding events comprise 90% of U.S. natural disasters, and are increasing with climate change. As with other EJ issues, communities of color are hit disproportionately hard with flooding and the damage, expense and disruption it causes. Strategies and solutions from around the country, and from Bridging The Gap’s direct experience in Kansas City, will be explored.
Time	1:30-2:30 p.m.
Location	Magis Activity Center
Presenter	Whitney Wilson, WaterOne Board, Moderator Bo Moreno, IBEW Local 124 Karlo Meave, SunSmart

Breakout Room #4

St. Ignatius Science Center, Room 115 Schedule

[Return to main event agenda](#)

11:00 a.m. *Building Better Buildings*

Description	63% of KC’s emissions come from commercial and residential buildings! This session features diverse viewpoints on KC’s enhanced energy code, the Zero Code, LEED certification, and Passive House (PHIUS) certified design. Speakers include perspectives from a local architect, engineer, developer, and homeowner, who will share valuable insights and experiences, and engage the participants in discussion about advancing sustainable and efficient construction practices.
Time	11:00-12:00 p.m.
Location	<i>St. Ignatius Science Center, Room 115</i>
Presenters	<i>Moderator: Jeremy Knoll Ashley Eusey, IECC Danny Roberson, Arnold Development Group Sush Govindan, Passive House Resident</i>

12:30 p.m. *Lunchtime Dialogue: Federal Climate Funding Opportunities from the EPA*

Description	Recent landmark legislation has brought new opportunities to create healthier, resilient communities. The Bipartisan Infrastructure Law (BIL) and Inflation Reduction Act (IRA) provide EPA with historic investments of over \$100 billion combined, designed to deliver a wide range of environmental programs, advance environmental justice by prioritizing low-income and disadvantaged communities, and combat climate change by supporting clean energy investments and reducing greenhouse gas emissions and other air pollutants. This session will highlight the EPA programs available, what’s to come, and how all communities can benefit.
Time	12:30 p.m.
Location	<i>St. Ignatius Science Center, Room 115</i>
Presenter	<i>Andrew Wynne, EPA Region 7</i>

Breakout Room #4 (Continued)

St. Ignatius Science Center, Room 115 Schedule

[Return to main event agenda](#)

1:30 p.m. <i>Where Stormwater and Environmental Justice Meet</i>	
Description	Heavy precipitation and flooding events comprise 90% of U.S. natural disasters, and are increasing with climate change. As with other EJ issues, communities of color are hit disproportionately hard with flooding and the damage, expense and disruption it causes. Strategies and solutions from around the country, and from Bridging The Gap’s direct experience in Kansas City, will be explored.
Time	1:30-2:30 p.m.
Location	<i>St. Ignatius Science Center, Room 115</i>
Presenter	<i>Kristin Riott, Bridging The Gap</i>



Thank you to our sponsors!

Presenting Sponsors

IBEW 124

Power Partners

SMART Sheet Metal Local #2

Transformative Sponsors

Black & Veatch

BranchPattern

Evergy

Hallmark

NextEra

Panasonic

Victor L. and Helen B. Regnier Fund

Resilient Sponsors

Advent Health

Bayer

City of Mission

Grundfos

Husch Blackwell

JE Dunn

Kala Performance Homes

Missouri Organics

Treanor HL

Sustainable Sponsors

Ashok Gupta

BNIM

City of Independence

City of Kansas City, Missouri

City of Roeland Park

Curtin Property Company

FlowEnergy

HDR

Lights On

*Resurrection, A United
Methodist Church*

Sierra Club

T-Mobile Center

Trane

US Green Building Council

Thank you to our sponsors!

Adaptive Sponsors

Burns & McDonnell
City of Merriam, KS
City of Overland Park, KS
City of Prairie Village, KS
City of Westwood, KS
Climate & Energy Project
Corbion
Cove.Tool
Entegriety Partners
Heartland Conservation
Alliance

Jennings Engineering
Johnson County Commissioner
Becky Fast
Lamar Johnson Collaborative
Little Government Relations
League of Women Voters
Johnson County
The Nature Conservancy
North Kansas City
Populous
Ripple Glass
Union Station/Science City

In-Kind Sponsor

KC Can Compost

Expo Participants

Citizens Climate Lobby
Climate & Energy
Project
EPA
Flourish Furniture Bank
Green Come True
Greenability
Hallmark
HDR
IKEA
Kala Performance
Homes
Kansas Infrastructure

Hub
KC Can Compost
League of Women
Voters Johnson Co.
MARC Climate
Pollution Reduction
Grant
Metro Energy
Missouri Organics
Net Zero C6, Inc.
Northern Flyer Alliance
Panasonic
Plug In KC/Everygy

Ripple Glass
Re.Use.Full
Resilient Activist
Sierra Club
SMART Sheet Metal
Local Union No. 2
Stitching Change INC
Syntax Land Design
The Nature
Conservancy
U.S. Green Building
Council/USGBC

MAP



#KCClimateSummit